

PORTSMOUTH PARTNERSHIP

Promoting economic growth, leadership and education within the City of Portsmouth

Newsletter No. 3

www.portsmouthpartnership.org

November 2007



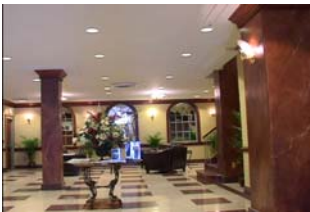
Hawthorn Suites Hotel

HAWTHORN SUITES AT GOVERNOR DINWIDDIE JOINS *NATIONAL TRUST OF HISTORIC HOTELS*

HERE'S a recipe for success: take one old, neglected hotel; summon the vision to appreciate its beauty, location and potential; assemble the tax credits and incentives necessary to make its revitalization economically feasible; and find a new owner willing to make the investment required to modernize its accommodations while respecting its historic integrity. The result? A 63 year old **Hawthorn Suites Hotel** in Portsmouth, recently named a member of the **National Trust Historic Hotels of America**.

IN FEBRUARY of 1999 the **Greater Portsmouth Development Corporation**, or **GPDC**, consisting of the City of Portsmouth, the Portsmouth Redevelopment and Housing Authority and the **Portsmouth Partnership**, saw the **Hotel Governor Dinwiddie's** potential, and purchased it using its 501 c 3 status to lower its acquisition costs.

By spring of 2005 its new owner, Raj Randeria, had utilized several tax incentives – including both federal and state - to defray a significant portion of his \$5+ million investment and, with locally produced furnishings and a **staff of twenty**, was open for business. Mr. Randeria's high standards and attention to detail have produced a magnificent boutique hotel that has successfully drawn new visitors to Portsmouth's Olde Towne district, and produced hundreds of thousands of dollars in **tax revenue** for the city.



Hawthorn Suites lobby

NATIONAL TRUST HISTORIC HOTELS OF AMERICA (www.historichotels.org) has recognized just over 200 hotels for maintaining their "historic integrity, architecture and ambience." According to the Trust, membership requires that a property "be at least 50 years old, listed in or eligible for the National Register of Public Places or recognized locally as having historic significance." With over 60 rooms, a restaurant, a banquet room and street-level space where local artists create and sell their own works, **Hawthorn Suites at Governor Dinwiddie** contributes in a major way to the energy and positive "buzz" of Olde Towne. The **Portsmouth Partnership** thanks and congratulates Mr. **Raj Randeria** on his achievement, his recent recognition and his significant contribution to our community.



"Steeple to Steeple" with
Lefcoe '07

STEEPLE TO STEEPLE WALKING TOUR

A LEFCOE ALUM'S TRADITION CONTINUES

AS A MEMBER of the 2002 **Lefcoe Leadership** class **Debbie Schwind** was struck with a flash of inspiration as she accompanied the group on its walking tour of Olde Towne, led by local writer and historian **Dean Burgess**. She recalled a "Steeple to Steeple" walking tour of New York City's churches which combined exercise and fresh air with fellowship and

an appreciation of local history. Why not, she thought, organize a similar event

around **Olde Towne's** many beautiful and historic churches? She approached Dean Burgess with the idea, and now their 2002 collaboration has become a popular annual

event which, according to Burgess, has sold out in each of the last two years. The first year's

proceeds benefited the restoration project at **St. Paul's**, while this year's proceeds were donated to the **HER** shelter. Debbie's enduring gift to her community combines fellowship and purpose with a love of history and community.

Debbie was awarded the **Vann H. Lefcoe Leadership Award** in 2004.



Lefcoe alumna
Debbie Schwind



GPDC 9 years 1,000 jobs \$7,000,000 tax revenue

